

APRIL 2021 SUBROGATION NEWSLETTER

What Does It Mean To "Total" A Vehicle

Understanding the Difference Between Total Loss and Salvage Vehicles. Everybody knows what it means to "total" a vehicle. But very few actually understand the relationship between a totaled vehicle and state law regarding when such a vehicle can be titled and driven on public roads. Because these concepts play a key role in understanding collision losses and subsequent subrogation efforts, this article will pull back the curtains on these terms. [Read More....](#)



The Risks of Recording Business Calls



This call may be monitored or recorded for quality assurance and training purposes. Businesses who record phone calls for "training and quality assurance" purposes should be on high alert that their actions could carry significant consequences. The same is true for insurance professionals who record phone calls and interviews with witnesses. Understanding the law in this area is an absolute necessity; and complying with it is not always easy. [Read More....](#)

Wisconsin Court of Appeals Confirms Omnibus Coverage Follows Vehicle, Not Driver

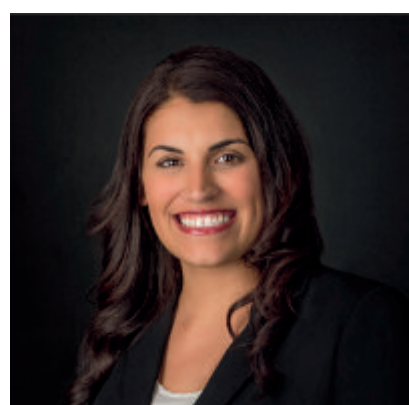
Recently the Wisconsin Court of Appeals was tasked with determining whether the omnibus provision multiplies policy limits for multiple insureds' liability for use of a non-owned automobile not named in the policy, despite policy language to the contrary. The court held that omnibus coverage extensions follow the vehicle, not the driver. Holding otherwise would extend coverage beyond the contemplation of the Wisconsin legislature and motor vehicle insurers. [Read More....](#)



Webinar | Advanced Concepts of California Workers' Compensation Subrogation

This advanced course will go into the more complex aspects of California workers' comp subrogation, such as employer negligence, allocation of third-party recovery, attorneys' fees and costs, how future credit works, third-party compromise and release, waivers of subrogation, borrowed servant doctrine, jurisdiction of the Workers' Comp Appeals Board, and other issues affecting subrogation.

This webinar is a continuation of MWL's previous webinar on *Introduction to California Workers' Compensation Subrogation*. It will benefit claims professionals in all levels of experience who have workers' compensation subrogation responsibilities in the Golden State.



Date: May 11, 2021
Time: 11:00 - 12:00 p.m. (CDT)
Presenter: [Katherine Sandoval](#)
Cost: Complimentary

[Click HERE](#)
To Register For Webinar

New Client Introduction to Matthiesen, Wickert & Lehrer, S.C.



Ashton Kirsch will be presenting a brief introduction to MWL and an outline of the premier services that we provide to our clients on May 12, 2021 at 10:00 to 10:30 a.m. (CDT). If you or your company are new to MWL and have considered working with our firm, then this will be a great opportunity for you to get to know more about us. The presentation will introduce you to our national recovery program and explain why our unique practice will allow you to maximize subrogation recoveries. Ashton will be available for a brief Q/A following the presentation. You can register to join this presentation by clicking [HERE](#).

Verdicts and Settlements

Mark Solomon was recently successful in settling a workers' compensation case involving a traumatic injury at an industrial facility. An investigation determined that a piece of equipment at the facility was defectively designed and unreasonably dangerous to the employees working in the area. The injuries to the employee required numerous surgeries and significant time off of work for recovery. The case settled at mediation in the seven-figure range.



Time Travel For The Insurance Industry

See [HERE](#) for a provocative 60-second video explaining why Matthiesen, Wickert & Lehrer views the handling of your subrogation claims - large and small - as time travel for the insurance industry. We help turn back the hands of time and attack the enemy of our industry - claims - utilizing our experience and expertise. Check it out!



Join MWL's LinkedIn Subrogation Support Network Group!

We welcome you to join our LinkedIn [Subrogation Support Network](#) Group! It is a community managed by Matthiesen, Wickert & Lehrer, S.C., that offers insurance professionals a place to interact, discuss subrogation insurance-related topics and issues, ask subrogation questions, and keep abreast of new developments and/or changes in the subrogation law for all 50 states. If you would like to join this LinkedIn group, please click [HERE](#).

We Are Social | Follow Us

We are asking our clients and friends to help us expand our social media presence by following our firm's [LinkedIn](#), [Facebook](#), [Twitter](#), and [YouTube](#) pages. The legal face of insurance litigation in our industry seems to change almost daily. Following our social media pages will assist you in keeping up-to-date and informed on developments and changes in the law that effect the industry, which is key to obtaining the best results.

MATTHIESEN, WICKERT & LEHRER, S.C.
Hartford, WI ❖ New Orleans, LA ❖ Santa Ana, CA ❖ Austin, TX
Jacksonville, FL ❖ Boston, MA
Phone: (800) 637-9176
www.mwl-law.com

[View Online](#)



[Update my Preferences](#) | [Forward to a friend](#) | [Unsubscribe](#)